



Rhode Island Environmental Literacy Plan

No Child Left Inside Legislation



Sponsored by Rhode Island's Senator Jack Reed

Hosted an Informational Meeting

Garry Heath, No Child Left Inside Coalition



Over 50 people attended!

Teachers

Department of Education

Higher Education

State Legislation

School Board Association

Principles Association

Superintendent Association

Community and Environmental Organizations

Economic Development

Worked to Secure Funding

Rhode Island
Foundation
Small Grant -
\$7,500

Allowed us to hire a
consultant to work
on the plan.



Hired a Consultant !

Donna Braun, Ed.D.

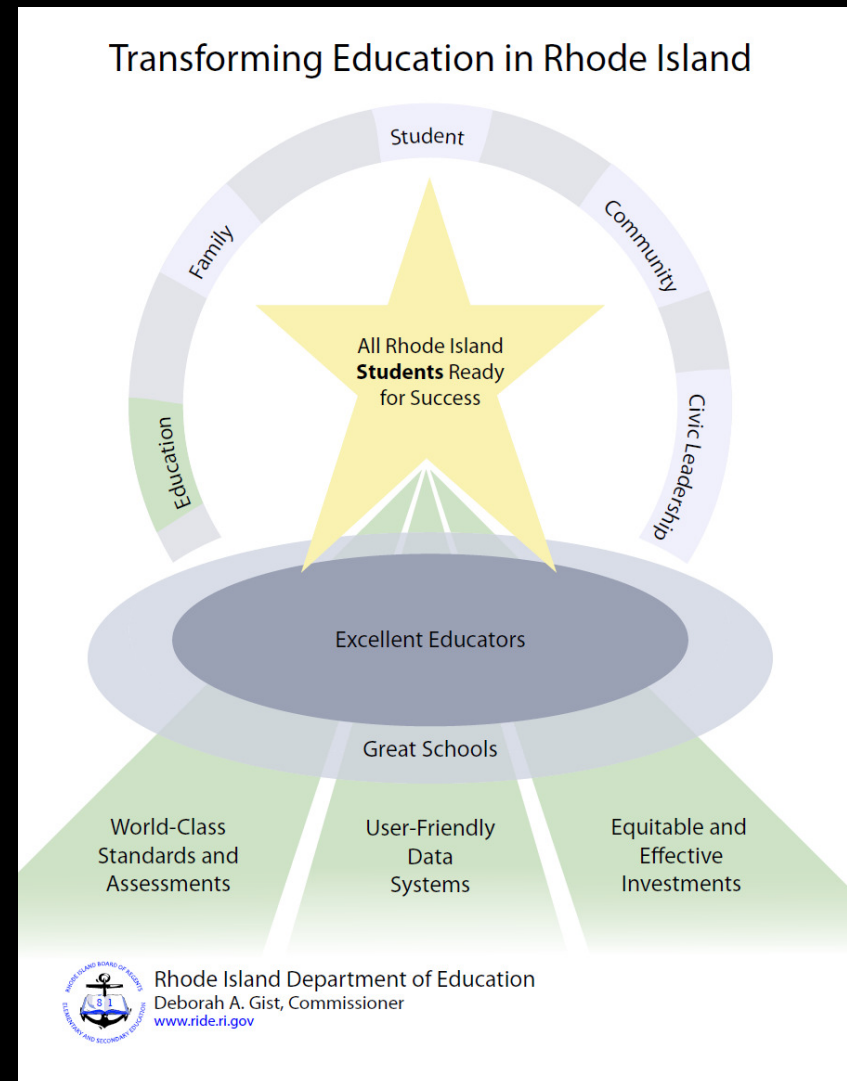


- ❖ RI Department of Education part of the hiring process
- ❖ Compiled Research on EE and other state ELPS
- ❖ Conducted a Gap Analysis
NAAEE Guidelines for Excellence with RI State
Education Standards
- ❖ Held Stakeholder Meetings to build support and
establish a working group.
- ❖ Conducted Teacher Survey

RI's Commissioner of Education

Deborah Gist

- ❖ New to the scene
- ❖ Has experience in Environmental Education
- ❖ Proponent for change – “Strategic Thinker”
- ❖ Race to the Top Funding



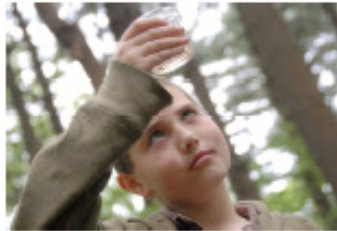
Rhode Island's Environmental Literacy Plan

Leveraging resources and supporting current initiatives to prepare youth in the 21st Century.

Vision:

The Rhode Island Environmental Literacy Plan is the stepping-stone needed to prepare environmentally literate citizens to work, participate and lead in the 21st century.

Whether becoming part of a STEM (science, technology, engineering, math) profession, joining the green jobs economy, running for office, teaching, or simply being able to make informed decisions about environmental issues such as water use, air quality and land development, Rhode Island needs environmentally literate citizens.



"Right now, in the second decade of the 21st century, preparing our students to be good environmental citizens is some of the most important work any of us can do. It is for our children and our children's children, and generations yet to come." U.S. Secretary of Education, Arne Duncan, September 21, 2010

Today Rhode Island students are not competitive with their peers in the Northeast in reading, math, and science.

Rhode Island students' math performance is lower than the national average overall and for every ethnic category (i.e. white, black, Hispanic, Asian, Native American).

There are far less Rhode Island students proficient in science on state assessments than in math and reading.

Only 9% of Rhode Island students who reside in urban areas are proficient on the 2009 state science assessments, as compared to students who reside in urban ring cities (23%) and suburban areas (36%)

Less than 1 in 10 students who are categorized as Black, Hispanic, English Language Learners, low income, or having disabilities scored proficient on the 2009 and 2010 state science assessment, as compared to the state-wide average of 1 in 4 students.

Over the last two years, Rhode Island student in grades 4 and 8 have performed lower on the science inquiry component, than on the other three areas of physical science, earth and space, and life science.

The proficiency demonstrated on the 2010 science state assessments goes down from 44% in grade 4 to 22% in grade 8 and 20% in grade 11.

(Source: Rhode Island Department of Education)



National Study

A recent national study of middle school students' environmental literacy showed that, on average, middle school students score lower on the cognitive skills component (issue identification, analysis, and planning) than on the other components of environmental literacy measured (e.g. ecological foundations, environment and human impact). Rhode Island students' inquiry scores show a similar trend.

(Source: 2008 National Environmental Literacy Assessment Project of EPA and NOAA).

Discover how an Environmental Literacy Plan can help reverse these trends.

Strengthened Case for Support

Illustrate Connections To: World Class Education STEM Professional Development Health

Additional Funding Secured

\$32,000

- ❖ Continue work on ELP
- ❖ Strengthen RIEEA
 - Web site
 - Marketing materials
 - Part-time coordinator
- ❖ Development of a Statewide EE Database



Draft ELP Completed! Now What???

- ❖ Need approval from the RI Department of Education
- ❖ What will implementation look like?
- ❖ State Science Standards - revisions?
- ❖ NECAP Assessment
- ❖ Graduation Requirements?



Next Strategic Moves

❖ Begin to roll out parts of the plan that funding is already in place for.

Online **EE Database**

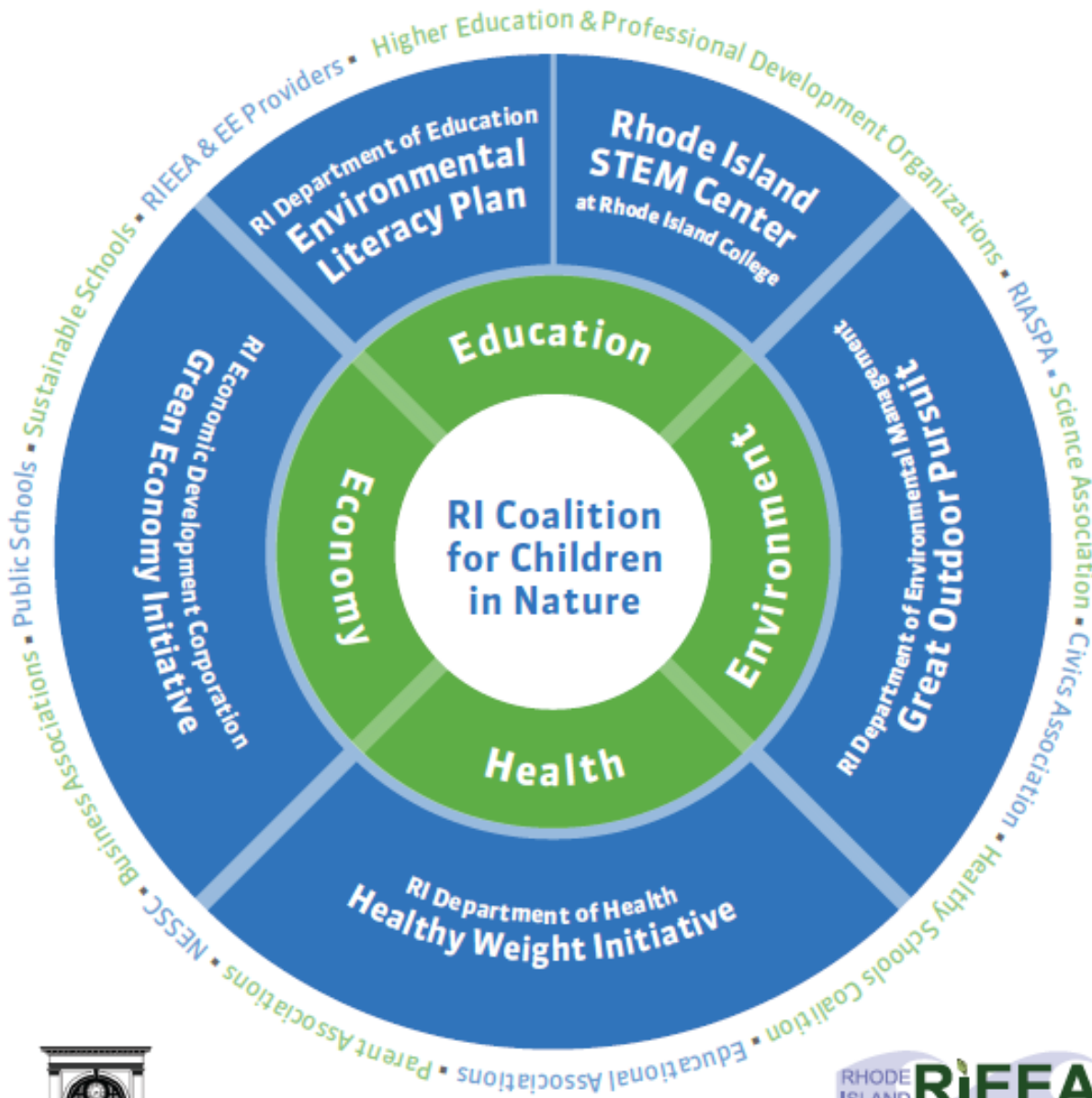
❖ Build stronger connections to key education initiatives – **STEM**

❖ Workforce Development – **Green Economy**

❖ ELP – **Race to the Top Funding**

❖ Establish a **Larger Initiative** for the ELP to fit into

Building a Larger Children in Nature Initiative



THE RHODE ISLAND FOUNDATION



Key Points...

- ❖ Build Strategic Partnerships – Collaboration
- ❖ Regular Communication is Key
- ❖ Funding
- ❖ STEM
- ❖ Workforce Development
- ❖ Broaden the platform
- ❖ Collaboration among NE states
- ❖ Build off the national EE momentum!

